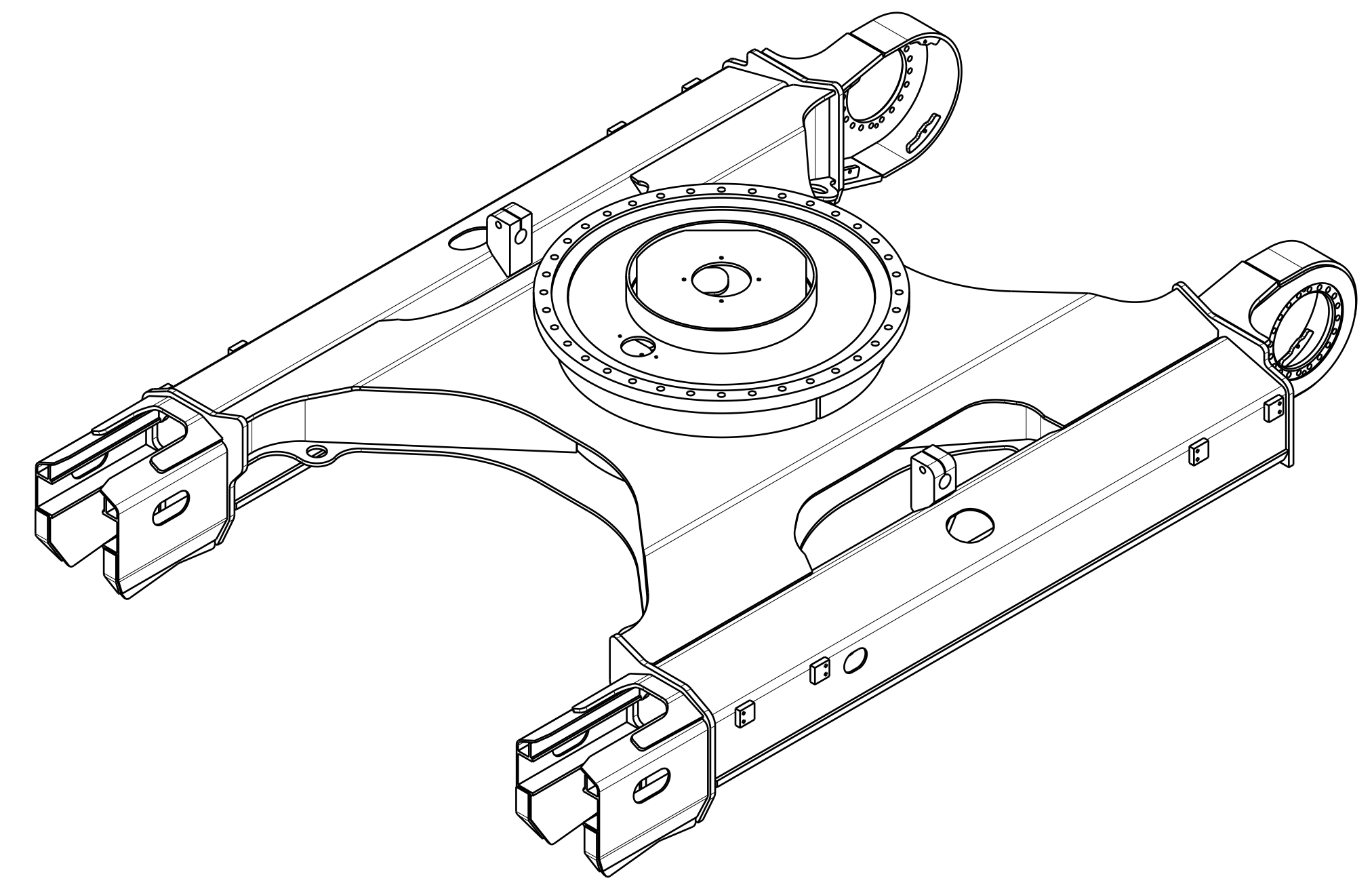
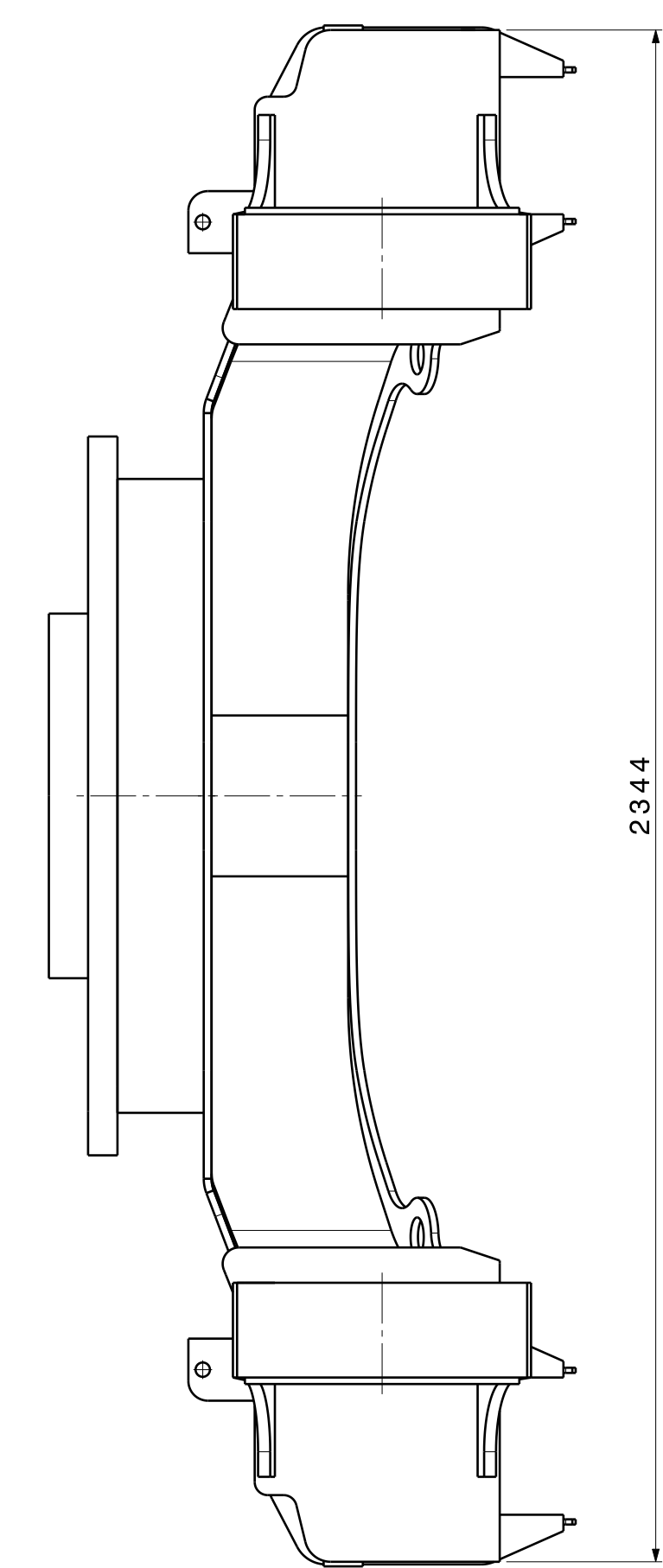
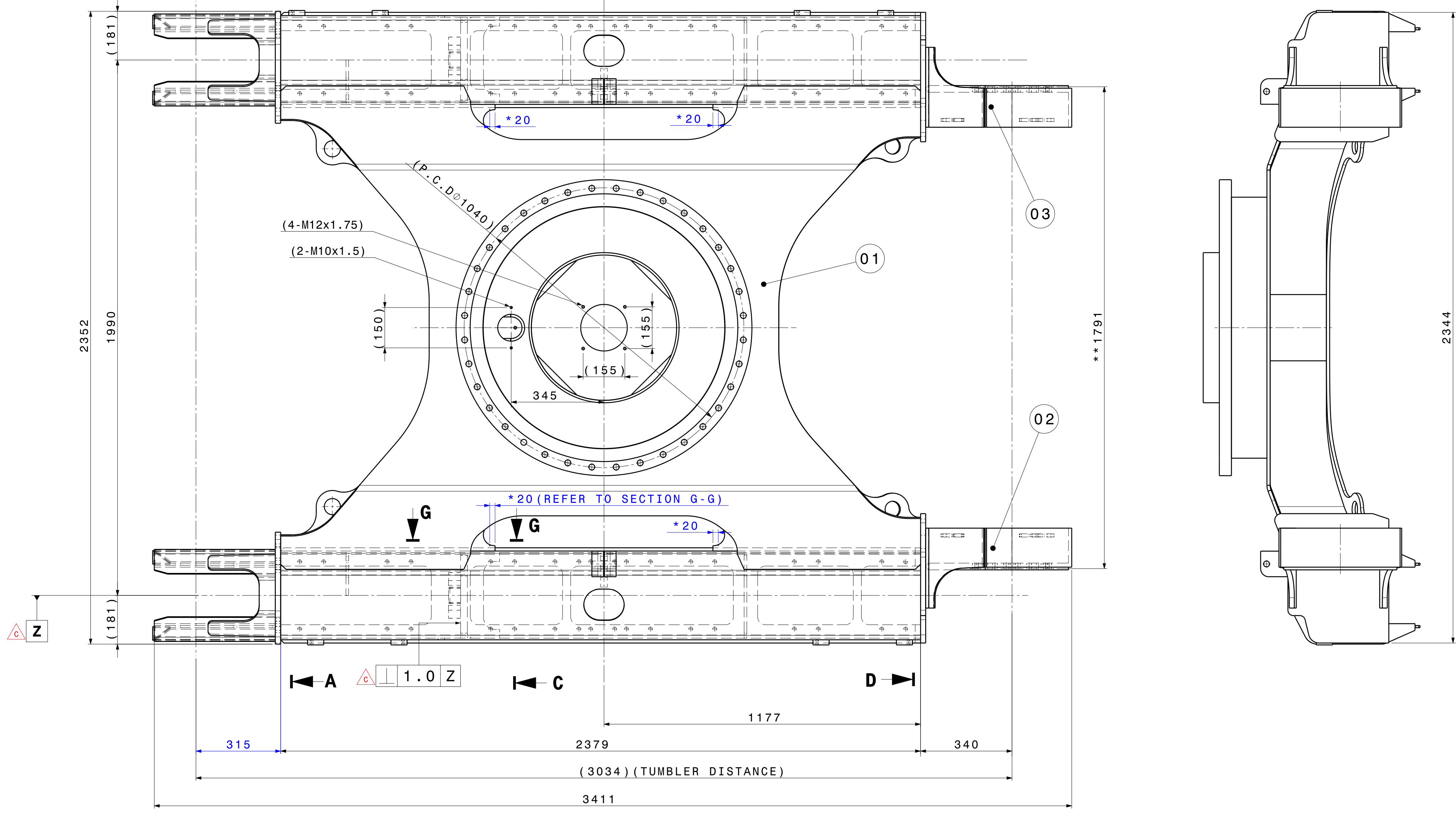
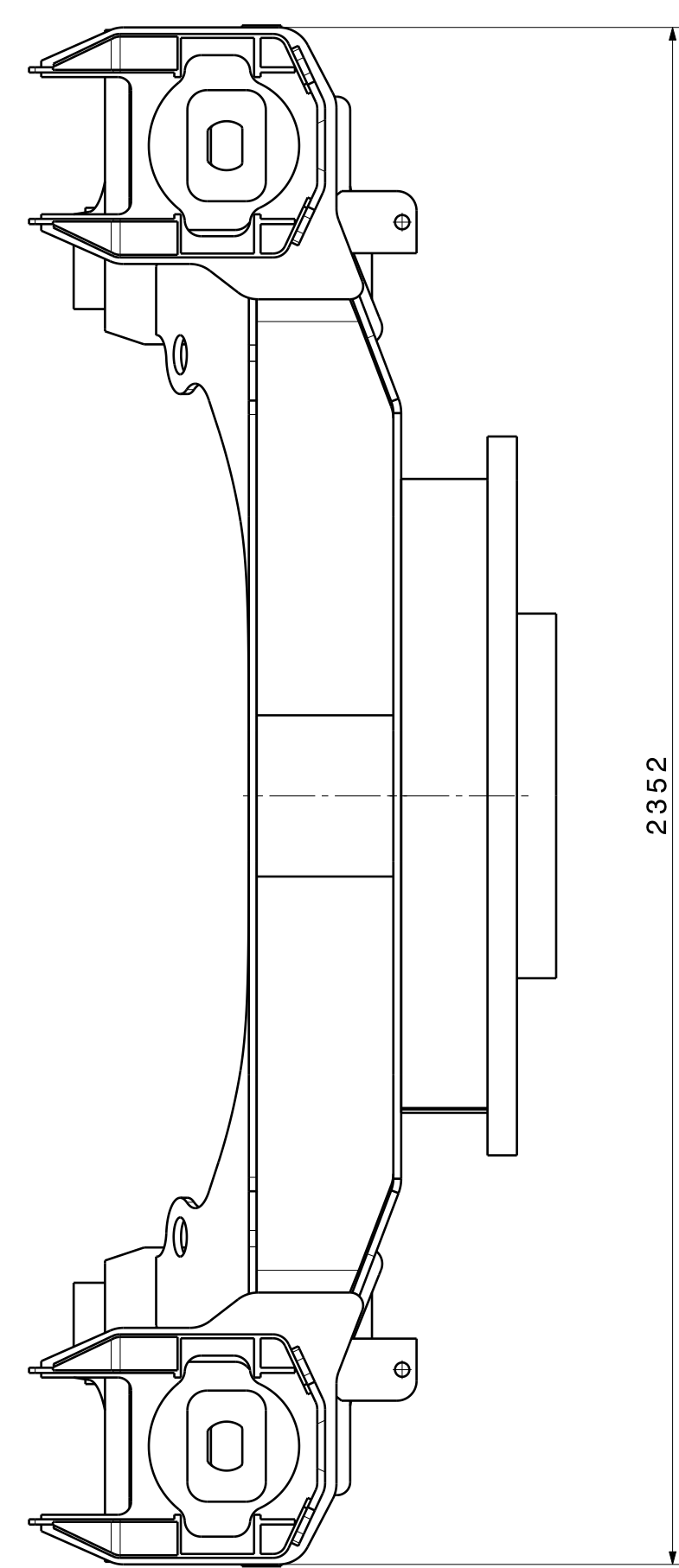
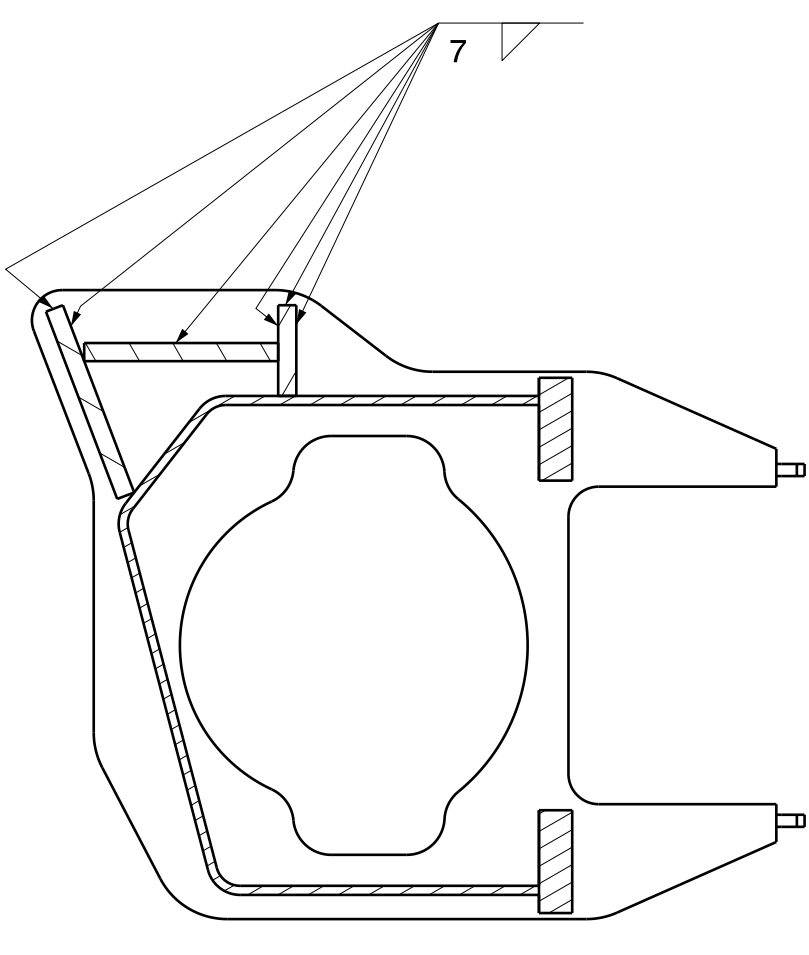


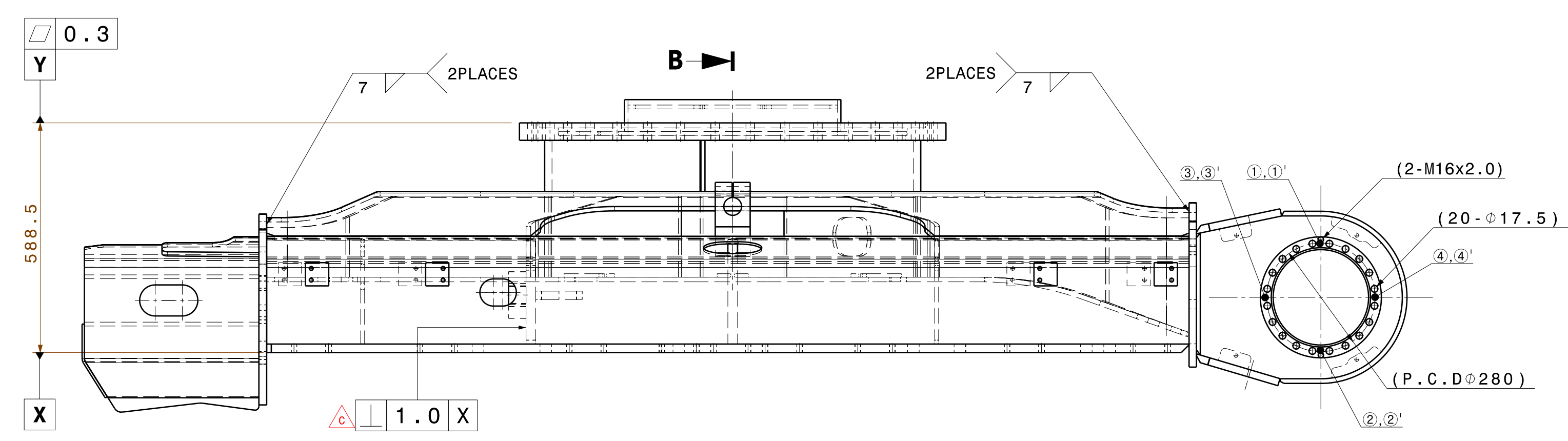
NO.	CHANGE NO	DESCRIPTION	DATE	DR	DS	CH	AP
1	01	PROTO	2011-01-20	001	001	001	001
2	02	PROTO IMPROVEMENT	2011-08-10	001	001	001	001
3	03	ENTERING CHANGE FOR U14_P1101	2011-08-10	001	001	001	001
4	04	CHANGE #01, INSERT TOLERANCES	2012-05-25	001	001	001	001



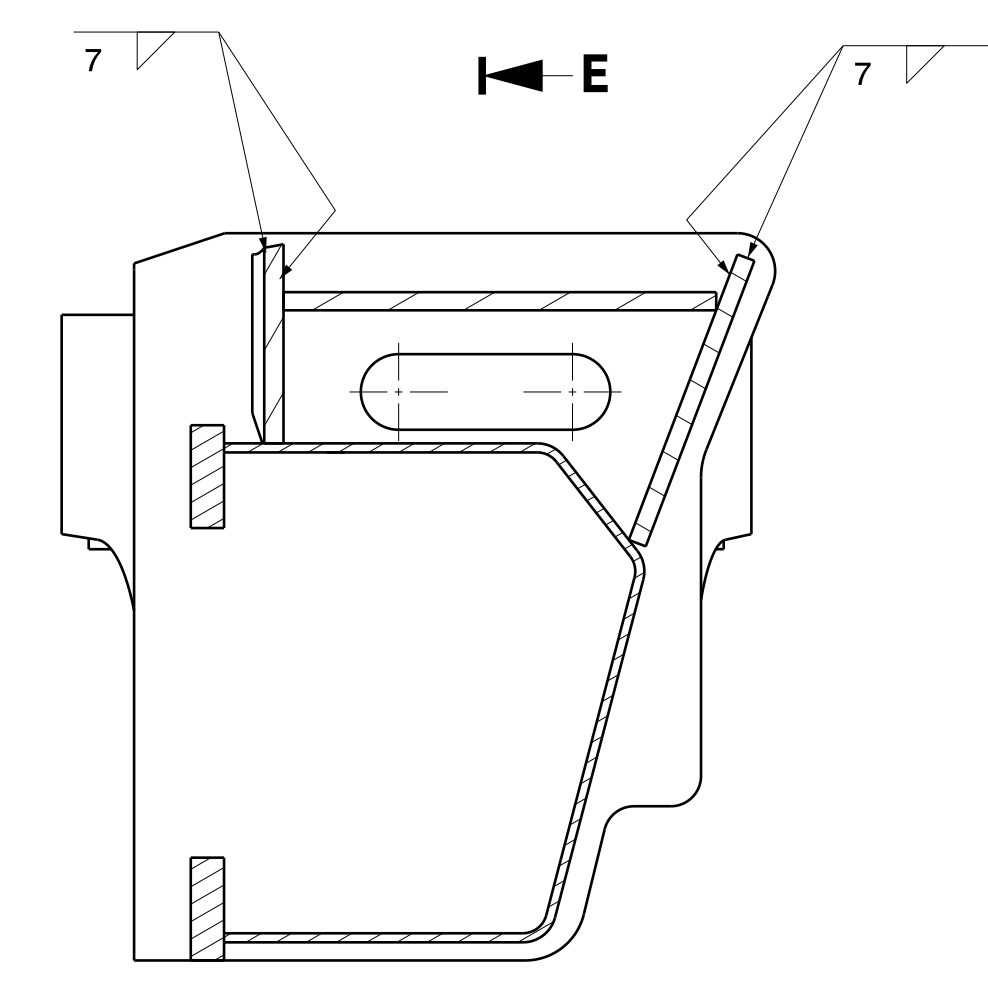
Isometric view



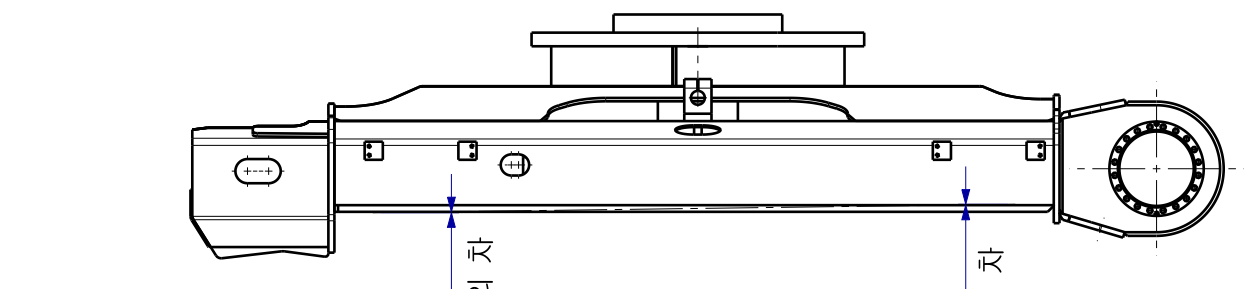
Section view A-A (1:5)  
(2PLACES)



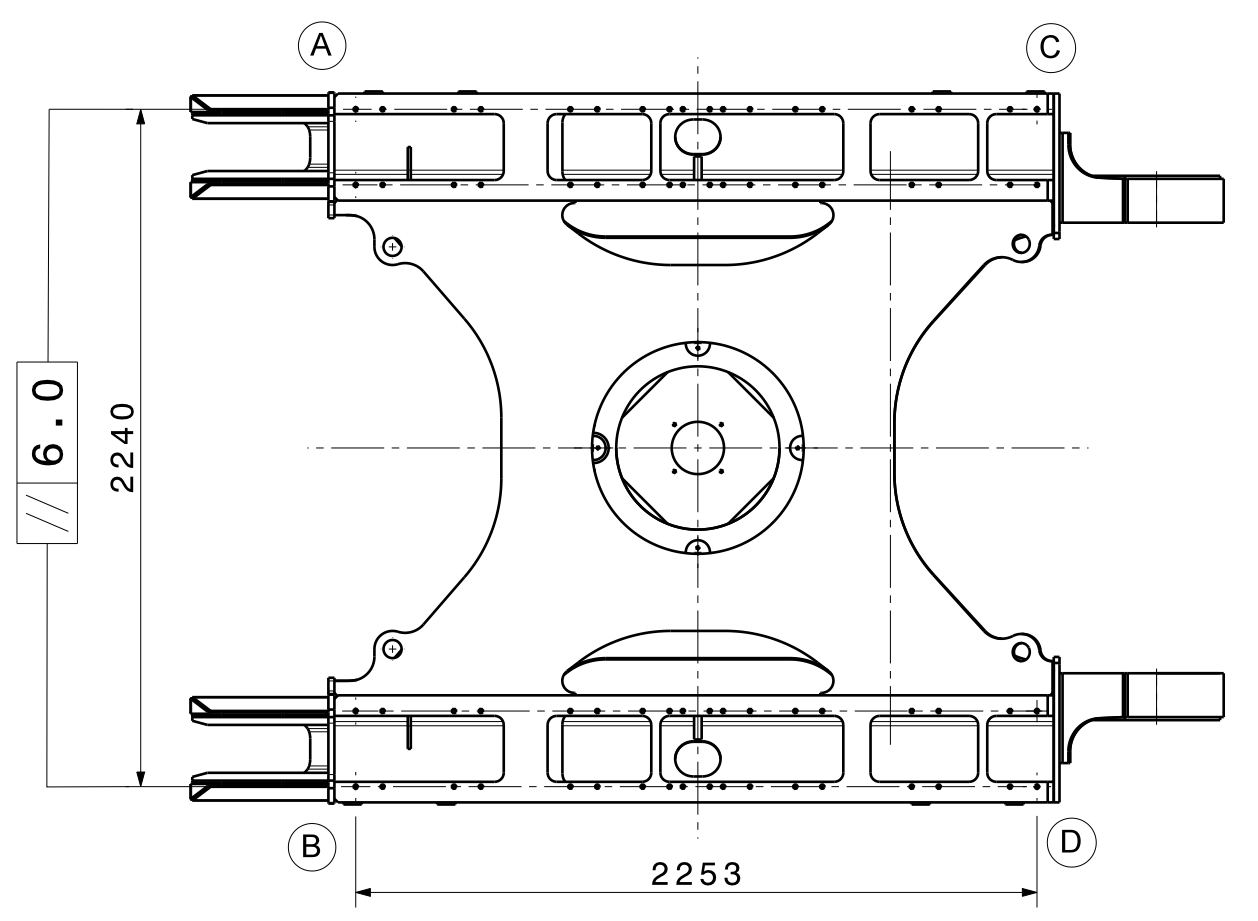
Section view B-B (1:5)



Section view D-D (1:5)  
(2PLACES)



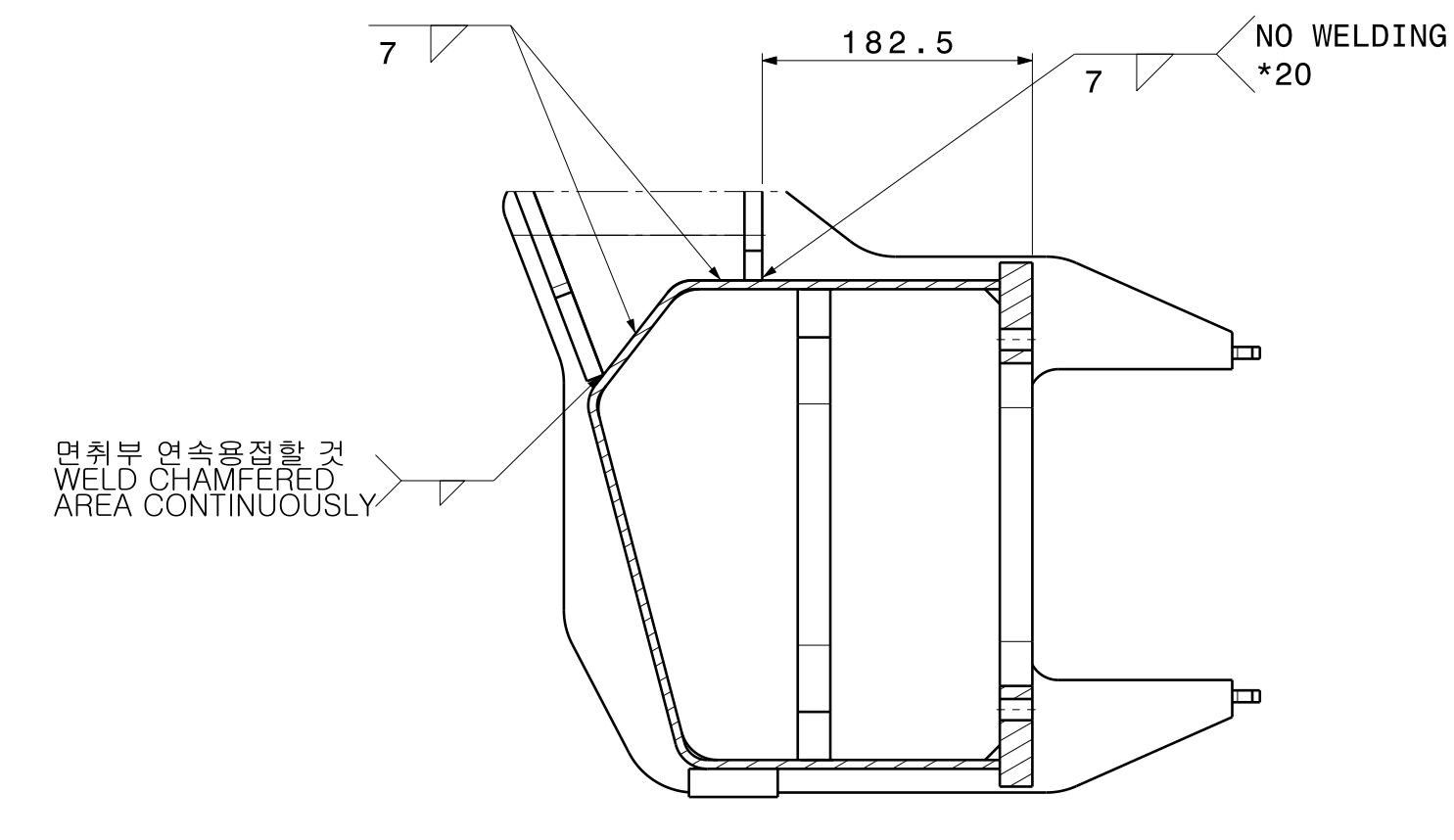
Section view E-E (1:5)



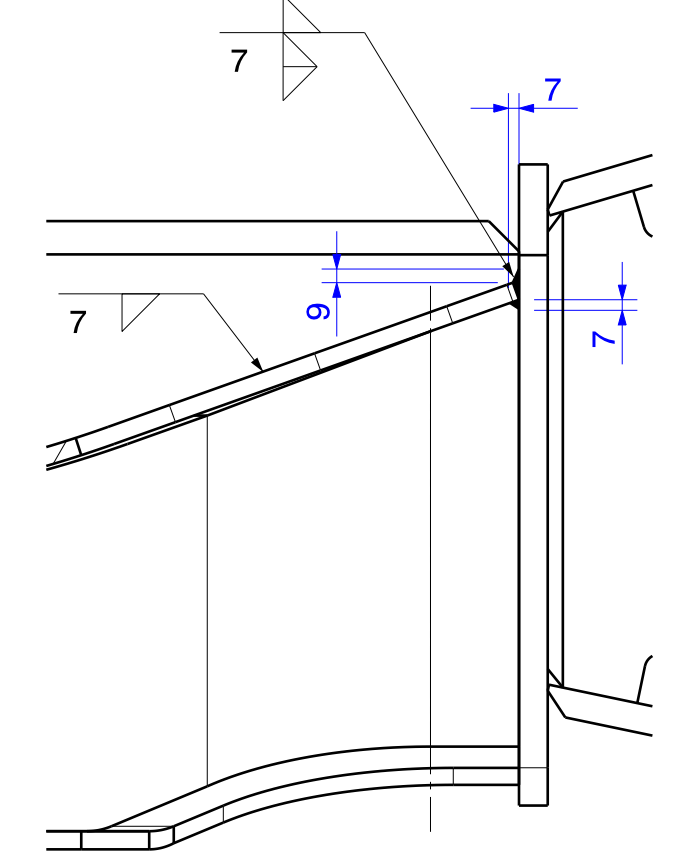
Section view G-G (1:5)  
(4 PLACES, #01과 #02, #03 연결부위)

- (주)
- SWING BEARING 취부면의 요철은 용접후 0.3mm이하로 할 것.
  - CO<sub>2</sub> ARC용접할 것.
  - 용접등급: W2
  - 도장 사양 (기공 가공부 제외)
    - 하도: HDES-P1115에 의할 것.
    - 상도: HDES-P1115에 의할 것.
  - 후취가 능히 도록 일련 번호를 부품의 적당 한 곳에 따라 또는 관통을 부착 할 것.
  - \*\*1791의 공차는 이공을 만족 할 것(①,②,③,④는 LH측 치수임).
    - ①,②,③,④ = -2.0 - 0.5
    - ⑤,⑥,⑦,⑧ = -0.5 - 1.0

- NOTE)
- SWING BEARING MOUNTING SURFACE IS TO FLAT WITHIN 0.3mm AFTER WELDING.
  - WELDING PROCESS: CO<sub>2</sub> ARC WELDING
  - WELDING GRADE: W2
  - PAINTING (EXCEPT MACHINED SURFACE)
    - BASE COAT: ACCORDING TO HDES-P1115
    - TOP COAT: ACCORDING TO HDES-P1115
    - UT-759 Q/T TOP DOOSAN DARK GRAY(HALF GLOSS), NUA098 (MUNSELL NO.3PB 3/0.5)
  - TRACEABLE SERIAL NUMBER MUST BE PUNCHED OR LABELED ON ADEQUATE PLACE.
  - \*\*1791LENGTH'S TOLERANCE(①,②,③,④는 LH).
  - ①,②,③,④ = -2.0 - 0.5
    - ⑤,⑥,⑦,⑧ = -0.5 - 1.0



Section view C-C (1:5)  
(4PLACES)



Section view F-F (1:5)

ITEM	PART NUMBER	PART NAME	MATERIAL	Q'TY	REMARKS	WT.
04	110963-00007	DRUM		1		25.15
03	160622-00028A	FRAME SIDE(PIN MOUNTING)		1		335.4
02	160622-00028A	FRAME SIDE(PIN MOUNTING)		1		335.4
01	160619-00117A	FRAME, CENTER		1		329.16

MODEL	PART NAME	SCALE
DX140LC-3	FRAME, TRACK	1/10
	LONG & NON DOZER	HEIGHT (Kg)
		1625.12

UNLESS SPECIFIED TOLERANCE: HDES-00165	METRIC REFERENCE NO	MATERIAL
	160617-00156B	
DRAWN: 2012-02-11	DESIGN: 2012-02-11	REVISION: 00
CHECK: 김정규	APPROVAL: [Signature]	SHEET: 1/1
	160617-00156C	INCHEON A0
	Doosan Infracore Co., Ltd.	INCHEON KOREA

